

****11/4/03 DRAFT****

**Fire Regime Condition Class (FRCC) Interagency Handbook
Reference Conditions**

Modeler: Doug Havlina

Date: 8/14/03

PNVG Code: PPIN2

Potential Natural Vegetation Group: Ponderosa Pine (Northern and Central Rockies).

Geographic Area: Northern and Central Rockies.

Description: PNVG generally occurs in dry valleys and gentle south-facing slopes in the lower montane zone in a heterogeneous mosaic of even-aged stands. Historically, this PVT was situated adjacent to grasslands, mountain shrublands, Douglas-fir, and lodgepole pine vegetation types.

Fire Regime Description: Fire Regime I, primarily short-interval (e.g., <20 yr) surface fires.

Vegetation Type and Structure

Class	Percent of Landscape	Description
A: post replacement	10	Bunchgrass and forb dominated community following lethal fire. Frequent sprouting shrubs and scattered conifer seedlings.
B: mid-development closed	10	Dense mid-development forest; pole to large pole size trees susceptible to stagnation. Marginal understory associated with limited site resources.
C: mid- open	20	Open mid-development forest with diverse herbaceous understory and scattered woody shrubs. Maintained by frequent burning.
D: late- open	55	Open late-development forest; widely spaced trees, diverse understory, and limited surface fuels due to frequent burning.
E: late- closed	5	Dense late-development forest with significant within-stand mortality. Poorly developed understory and substantial surface fuel accumulation.
Total	100	

Fire Frequency and Severity

Fire Frequency-Severity	Modeled Probability	Pct, All Fires	Description
-------------------------	---------------------	----------------	-------------

Replacement Fire	.004	7	Crown fire in B and E
Non-Replacement Fire	.057	93	Mostly surface fires; limited mosaic fire in B, C, and E
All Fire Frequency*	.061	100	

*Sum of replacement fire and non-replacement fire probabilities.

References

Agee, James K. 1990. The Historical Role of Fire In Pacific Northwest Forests. In: Walstad, J.K., Radosevich, S.R., and Sandberg, D.V. (editors). *Natural and Prescribed Fire in Pacific Northwest Forests*. Oregon State University Press, Corvallis, OR. P. 25-38.

Agee, James K. 1993. *Fire Ecology of Pacific Northwest Forests*. Island Press, Washington D.C. 493 p.

Agee, James K. 1994. *Fire and Weather Disturbances in Terrestrial Ecosystems of the Eastern Cascades*. Gen. Tech. Rep. PNW-GTR-320. Portland, OR: U.S. Department of Agriculture, Forest Service, Pacific Northwest Research Station. 37 p.

Anderson, Hal E. 1982. *Aids to Determining Fuel Models For Estimating Fire Behavior*. Gen. Tech. Rep. INT-122. Ogden, UT: U.S. Department of Agriculture, Forest Service, Intermountain Forest and Range Experiment Station. 22 p.

Arno, Stephen F. 2000. Fire in western forest ecosystems. In: Brown, James K.; Kapler-Smith, Jane, eds. *Wildland fire in ecosystems: Effects of fire on flora*. Gen. Tech. Rep. RMRS-GTR-42-vol. 2. Ogden, UT: U.S. Department of Agriculture, Forest Service, Rocky Mountain Research Station: 97-120.

Arno, Stephen F. 1980. Forest Fire History in the Northern Rockies. *Journal of Forestry*. 78(8):460-465.

Arno, Stephen F., Scott, Joe H., and Hartwell, Michael G. 1995. *Age-Class Structure of Old Growth Ponderosa Pine/Douglas-fir Stands and its Relationship to Fire History*. Res. Paper INT-RP-481. Ogden, UT: U.S. Department of Agriculture, Forest Service, Intermountain Research Station: 25 p.

Arno, Stephen F. 1976. *The historical role of fire on the Bitterroot National Forest*. Research Paper INT-187. Ogden, UT: U.S. Department of Agriculture, Forest Service, Intermountain Forest and Range Experiment Station. 29 p.

Arno, Stephen F., and Menakis, James P. 1997. *Fire Episodes in the Inland Northwest (1540-1940) Based on Fire History Data*. Gen. Tech. Rep. INT-GTR-

370. Ogden, UT: U.S. Department of Agriculture, Forest Service, Intermountain Research Station. 17 p.

Baker, William L., and Ehle, Donna. 2001. Uncertainty in surface fire history: the case of ponderosa pine forests in the western United States. *Canadian Journal of Forest Research* 31: 1205-1226.

Barrett, Stephen W. 1999. A Fire Regimes Classification for Northern Rocky Mountain Forests. 37 p.

Bradley, Anne F., Fischer, William C., and Noste, Nonan V. 1992. Fire Ecology of the Forest Habitat Types of Eastern Idaho and Western Wyoming. Gen. Tech. Rep. INT-GTR-290. Ogden, UT: U.S. Department of Agriculture, Forest Service, Intermountain Research Station. 92 p.

Brown, James K.; Smith, Jane Kapler, eds. 2000. Wildland fire in ecosystems: effects of fire on flora. Gen. Tech. Rep. RMRS-GTR-42-vol. 2. Ogden, UT: U.S. Department of Agriculture, Forest Service, Rocky Mountain Research Station. 257 p.

Brown, Peter M., Ryan, Michael G., and Andrews, Thomas G. 2000. Historical surface fire frequency in ponderosa pine stands in Research Natural Areas, central Rocky Mountains and Black Hills, USA. *Natural Areas Journal* 20: 133-139.

Brown, Peter M., and Shepperd, Wayne D. 2001. Fire history and fire climatology along a 5 degree gradient in latitude in Colorado and Wyoming, USA. *Palaeobotanist* 50: 133-140.

Crane, Marilyn F. 1982. Fire ecology of Rocky Mountain Region forest habitat types. Final report: Contract No. 43-83X9-1-884. Missoula, MT: U.S. Department of Agriculture, Forest Service, Region 1. 272 p. On file with: U.S. Department of Agriculture, Forest Service, Intermountain Research Station, Fire Sciences Laboratory, Missoula, MT.

Crane, M.F., and Fischer, W.C. 1986. Fire Ecology of the Forest Habitat Types of Central Idaho. Gen. Tech. Rep. GTR-INT-218. Ogden, UT: U.S. Department of Agriculture, Forest Service, Intermountain Research Station. 86 p.

Eyre, F. H., ed. 1980. Forest cover types of the United States and Canada. Washington, DC: Society of American Foresters. 148 p.

Fischer, William C., and Clayton, Bruce D. 1983. Fire Ecology of Montana Forest Habitat Types East of the Continental Divide. Gen. Tech. Rep. INT-GTR-141. Ogden, UT: U.S. Department of Agriculture, Forest Service, Intermountain Research Station. 83 p.

Hardy, Colin C., Kirsten M. Schmidt, James P. Menakis, R. Neil Samson. 2001. Spatial data for national fire planning and fuel management. *Int. J. Wildland Fire*. 10(3&4): 353-372.

Hessburg, P.F., Smith, B.G., Salter, R.B., Ottmar, R.D., and Alvarado, E. 2000. Recent changes (1930s-1990s) in spatial patterns of interior northwest forests, USA. *Forest Ecology and Management* 136 (2000) 53-83.

Kilgore, B.M. 1981. Fire in ecosystem distribution and structure: western forests and scrublands. p. 58-89. In: H.A. Mooney et al. (Technical Coordinators). *Proceedings: Conference on Fire Regimes and Ecosystem Properties*, Honolulu, 1978. Gen. Tech. Rep. WO-GTR-26.

Kuchler, A.W. 1964. *Potential Natural Vegetation of the Conterminous United States*. American Geographic Society Special Publication No. 36. 116 p.

Laven, R. D., Omi, P. N., Wyant, J. G., and Pinkerton, A. S. 1981. Interpretation of fire scar data from a ponderosa pine ecosystem in the central Rocky Mountains, Colorado. In: Stokes, M. A., and Dieterich, John H., technical coordinators. *Proceedings of the Fire History Workshop, October 20-24, 1980, Tucson, AZ*. General Technical Report RM-81. Fort Collins, CO: US Department of Agriculture, Forest Service, Rocky Mountain Forest and Range Experiment Station, pp. 46-49.

Lyon, J.L. 1984. *The Sleeping Child Burn - - 21 Years of Post-fire Change*. Research Station Paper INT-105, Ogden, UT: U.S. Department of Agriculture, Forest Service, Intermountain Research Station. 30 p.

Lyon, J.L., and Stickney, P.F. 1974. Early Vegetal Succession Following Large Northern Rocky Mountain Wildfires. In: *Proceedings, Tall Timbers Fire Ecology Conference*. Tallahassee, Florida. 14:355-375.

Morgan, Penelope, and Parsons, Russ. 2001. Historical range of variability of forests of the Idaho Southern Batholith Ecosystem. Report to Boise Cascade Corporation, Boise, ID. 35 p.

Ogle, Karen, and DuMond, Valerie. 1997. *Historical Vegetation on National Forest Lands in the Intermountain Region*. U.S. Department of Agriculture, Forest Service, Intermountain Region, Ogden, UT. 129 p.

Schmidt, Kirsten M, Menakis, James P., Hardy, Colin C., Hann, Wendel J., Bunnell, David L. 2002. Development of coarse-scale spatial data for wildland fire and fuel management. Gen. Tech. Rep. RMRS-GTR-87. Fort Collins, CO: U.S. Department of Agriculture, Forest Service, Rocky Mountain Research Station. 41 p. + CD.

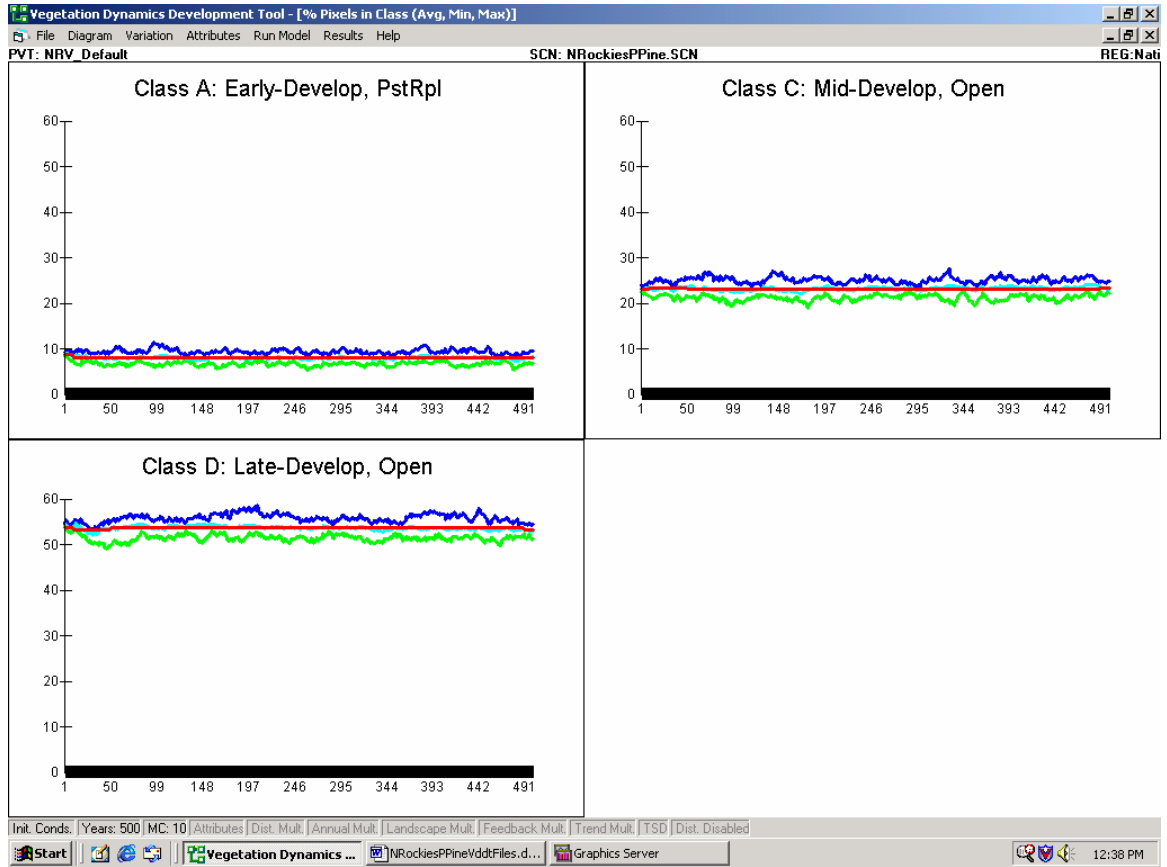
Smith, Jane Kapler, Fischer, William C. 1997. Fire Ecology of the Forest Habitat Types of Northern Idaho. Gen. Tech. Rep. INT-GTR-363. Ogden, UT: U.S. Department of Agriculture, Forest Service, Intermountain Research Station. 142 p.

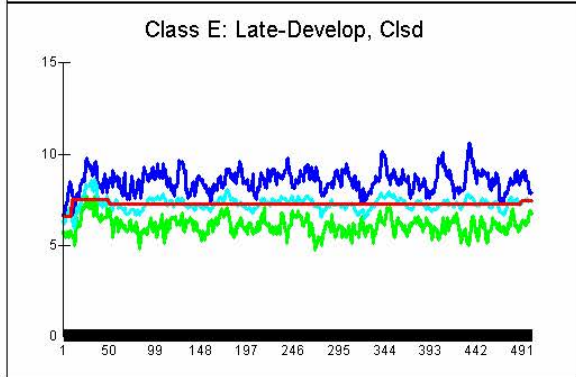
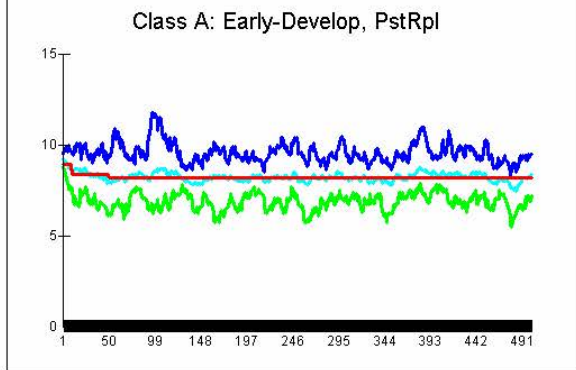
Steele, Robert, Arno, Stephen F., and Geier-Hayes, Kathleen. 1986. Wildfire Patterns Change in Central Idaho's Ponderosa Pine-Douglas-fir Forest. Western Journal of Applied Forestry. Vol. 1. No. 1. p. 16-18.

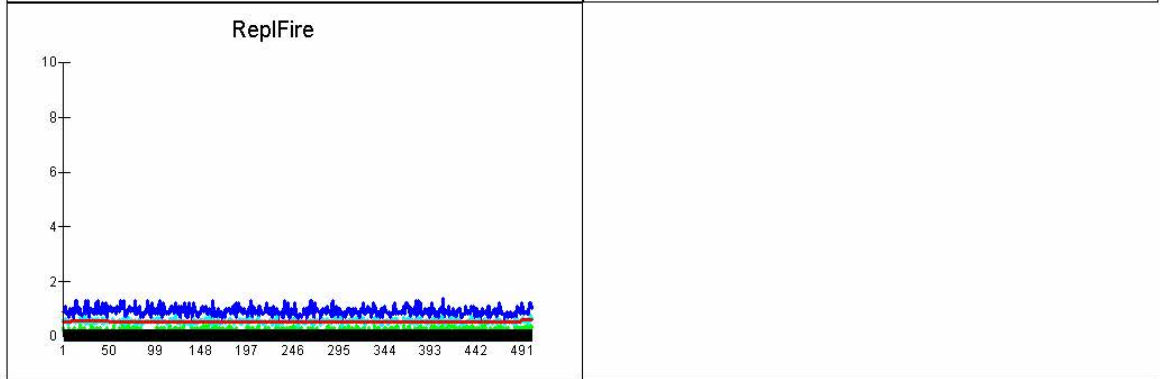
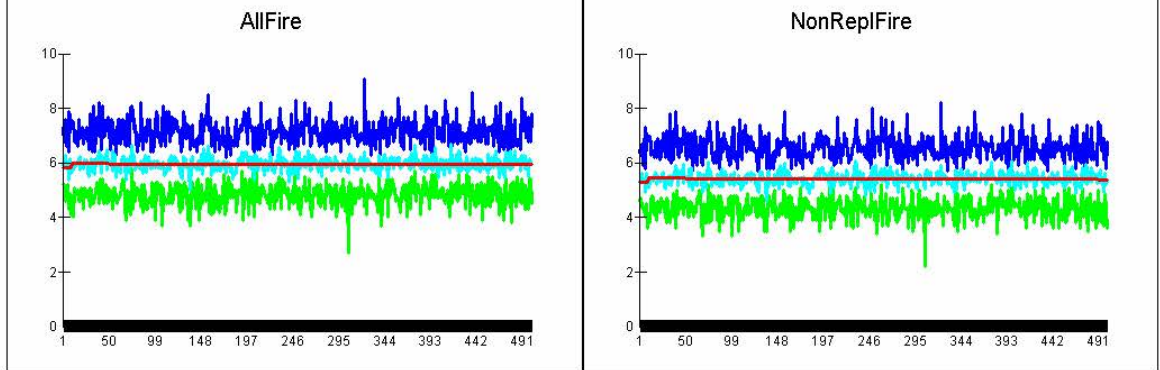
Steele, Robert, Pfister, Robert D., Ryker, Russell A., Kittams, Jay A. 1981. Forest Habitat Types of Central Idaho. Gen. Tech. Rep. INT-GTR-114. Ogden, UT: U.S. Department of Agriculture, Forest Service, Intermountain Research Station. 138 p. + map.

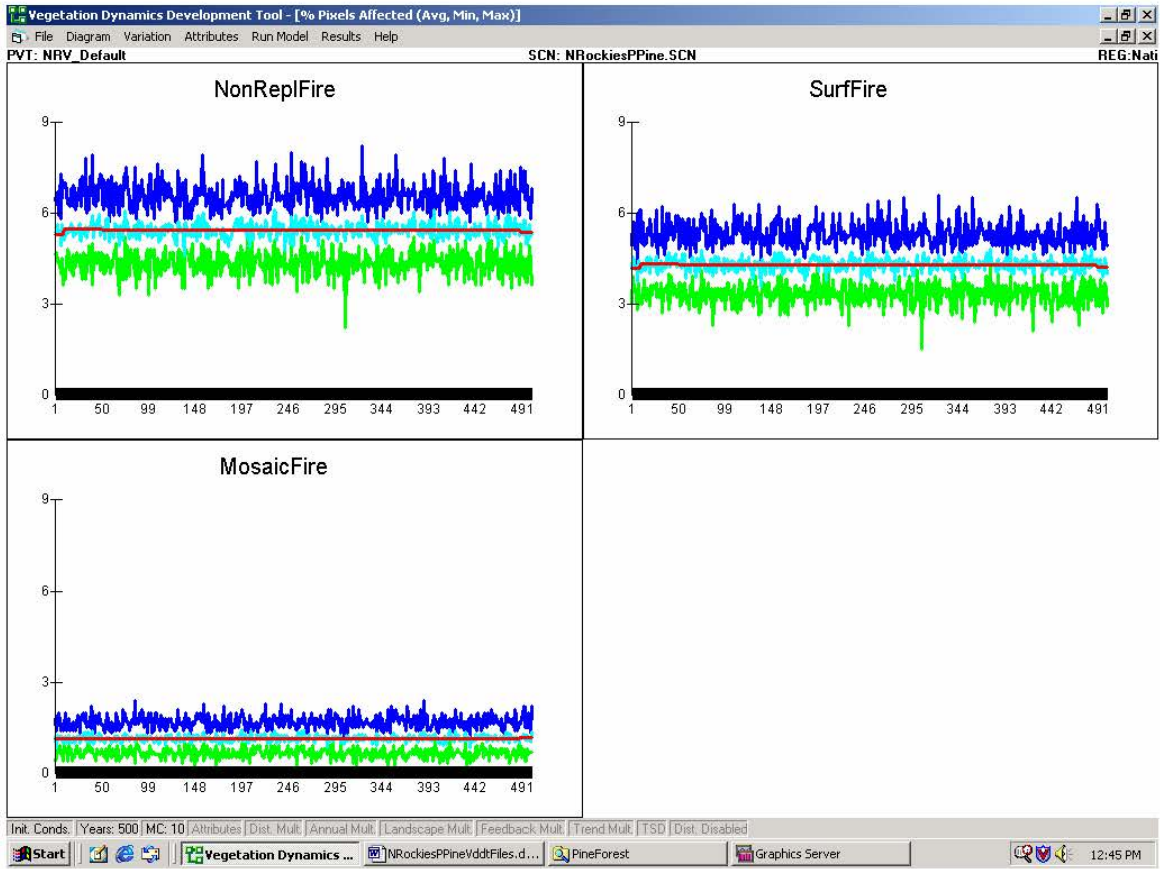
U.S. Department of Agriculture, Forest Service, Rocky Mountain Research Station, Fire Sciences Laboratory (2002, December). Fire Effects Information System, [Online]. Available: <http://www.fs.fed.us/database/feis/> [Accessed: 1/30/03].

VDDT RESULTS









Photographs:
Landscape CC1

Landscape CC2

Landscape CC3

Landscape-Current

Landscape-Historical

Class A – Early Development

Class B – Mid-Development Closed

Class C – Mid-Development Open

Class D – Late Development Open

Class E – Late Development Closed