

****4/6/05 DRAFT****

**Fire Regime Condition Class (FRCC) Interagency Handbook
Reference Conditions**

Modeler: Doug Havlina

Date: 4/6/05

PNVG Code: SAGE2

Potential Natural Vegetation Group: Sagebrush-Other (e.g., Silver Sagebrush spp.), with Trees.

Geographic Area: Great Plains.

Description: PNVG occurs in scattered patches in the Great Plains and short grass prairie, generally abutting ponderosa pine and juniper types. This group is primarily composed of the three subspecies of silver sagebrush, with lesser amounts of fringed sagebrush, Wyoming big sagebrush, budsage, and birdfoot sagebrush. Historic occurrence of trees generally restricted to rocky microsites resulting in very open structure. Ponderosa pine and juniper are the primary encroaching woody species. Common understory associates include buffalograss, wheatgrass, needlegrass, grama, and fescue species. Silver and fringed sagebrush are facultative sprouters.

Fire Regime Description: Fire Regimes I and II; short- to moderately long interval (e.g., <50 yr) mixed severity- and stand replacement fires.

Vegetation Type and Structure

Class	Percent of Landscape	Description
A: post replacement	15	Plains/prairie grass and forb dominated community, with sprouting sagebrush shrubs emerging
B: mid-development closed	5	Dense sagebrush and pole-sized juniper/pine stand, with plains/prairie grasses in interspaces
C: mid- open	35	Landscape mosaic of young juniper/pine trees, sagebrush plants, and mixed plains/ prairie grasses
D: late- open	40	Open, late-development mixed sagebrush and pine/juniper community with plains/prairie grasses in understory
E: late- closed	5	Dense, late-development juniper or pine stand with infrequent sagebrush and plains/prairie grasses

Total 100

Fire Frequency and Severity			
Fire Frequency-Severity	Modeled Probability	Pct, All Fires	Description
Replacement Fire	.018	45	Stand replacement fire in stages B and E
Non-Replacement Fire	.022	55	Surface and mosaic fire in stages C and D
All Fire Frequency*	.04	100	

*Sum of replacement fire and non-replacement fire probabilities.

References

Anderson, Hal E. 1982. Aids to Determining Fuel Models For Estimating Fire Behavior. Gen. Tech. Rep. INT-122. Ogden, UT: U.S. Department of Agriculture, Forest Service, Intermountain Forest and Range Experiment Station. 22 p.

Brown, James K.; Smith, Jane Kapler, eds. 2000. Wildland fire in ecosystems: effects of fire on flora. Gen. Tech. Rep. RMRS-GTR-42-vol. 2. Ogden, UT: U.S. Department of Agriculture, Forest Service, Rocky Mountain Research Station. 257 p.

Eyre, F. H., ed. 1980. Forest cover types of the United States and Canada. Washington, DC: Society of American Foresters. 148 p.

Hardy, Colin C., Kirsten M. Schmidt, James P. Menakis, R. Neil Samson. 2001. Spatial data for national fire planning and fuel management. Int. J. Wildland Fire. 10(3&4): 353-372.

Kilgore, B.M. 1981. Fire in ecosystem distribution and structure: western forests and scrublands. p. 58-89. In: H.A. Mooney et al. (Technical Coordinators). Proceedings: Conference on Fire Regimes and Ecosystem Properties, Honolulu, 1978. Gen. Tech. Rep. WO-GTR-26.

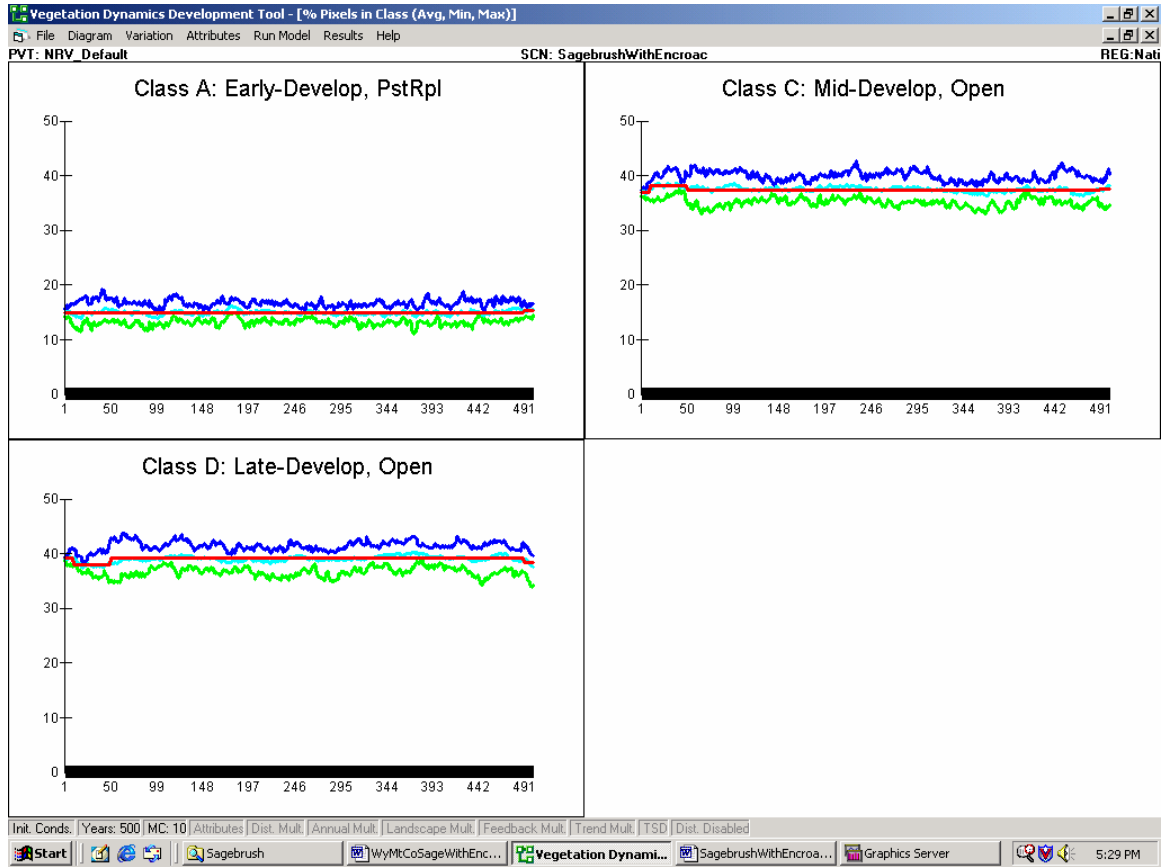
Kuchler, A.W. 1964. Potential Natural Vegetation of the Conterminous United States. American Geographic Society Special Publication No. 36. 116 p.

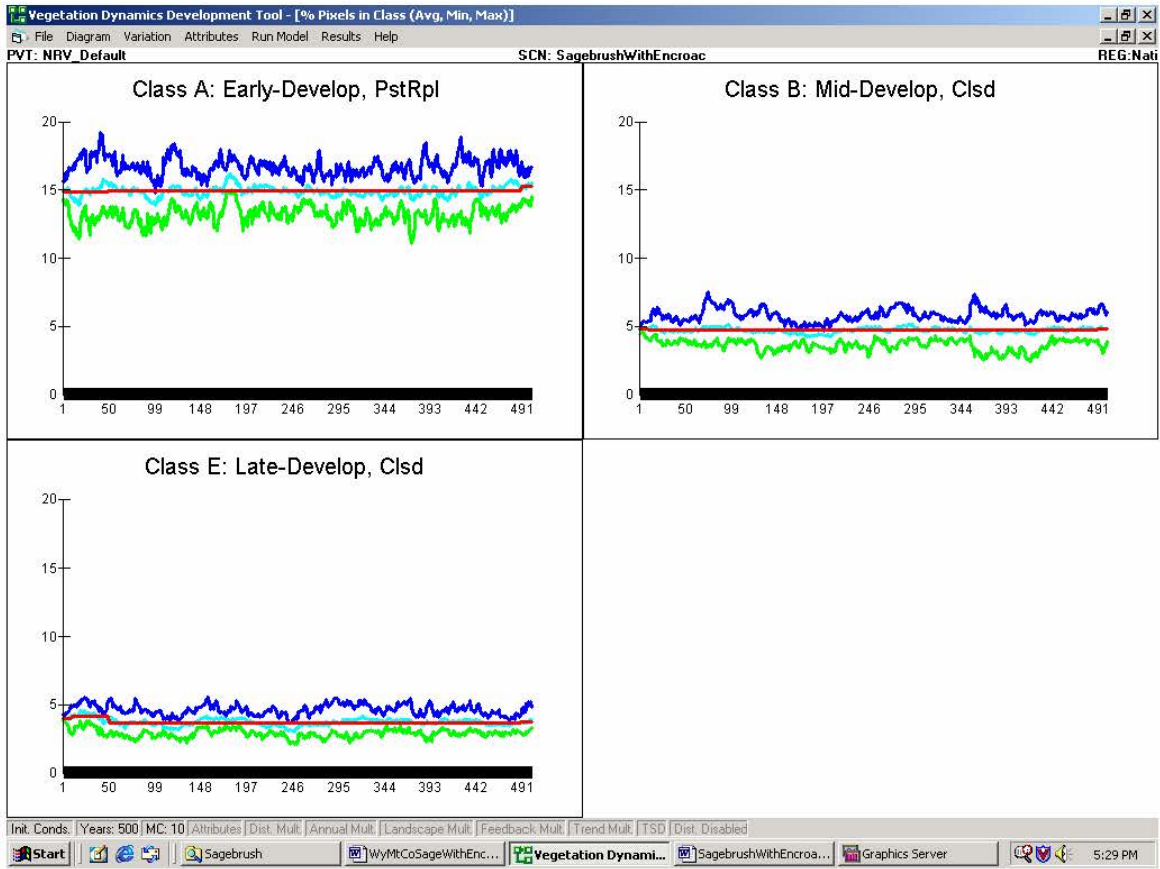
Schmidt, Kirsten M, Menakis, James P., Hardy, Colin C., Hann, Wendel J., Bunnell, David L. 2002. Development of coarse-scale spatial data for wildland fire and fuel management. Gen. Tech. Rep. RMRS-GTR-87. Fort Collins, CO: U.S. Department of Agriculture, Forest Service, Rocky Mountain Research Station. 41 p. + CD.

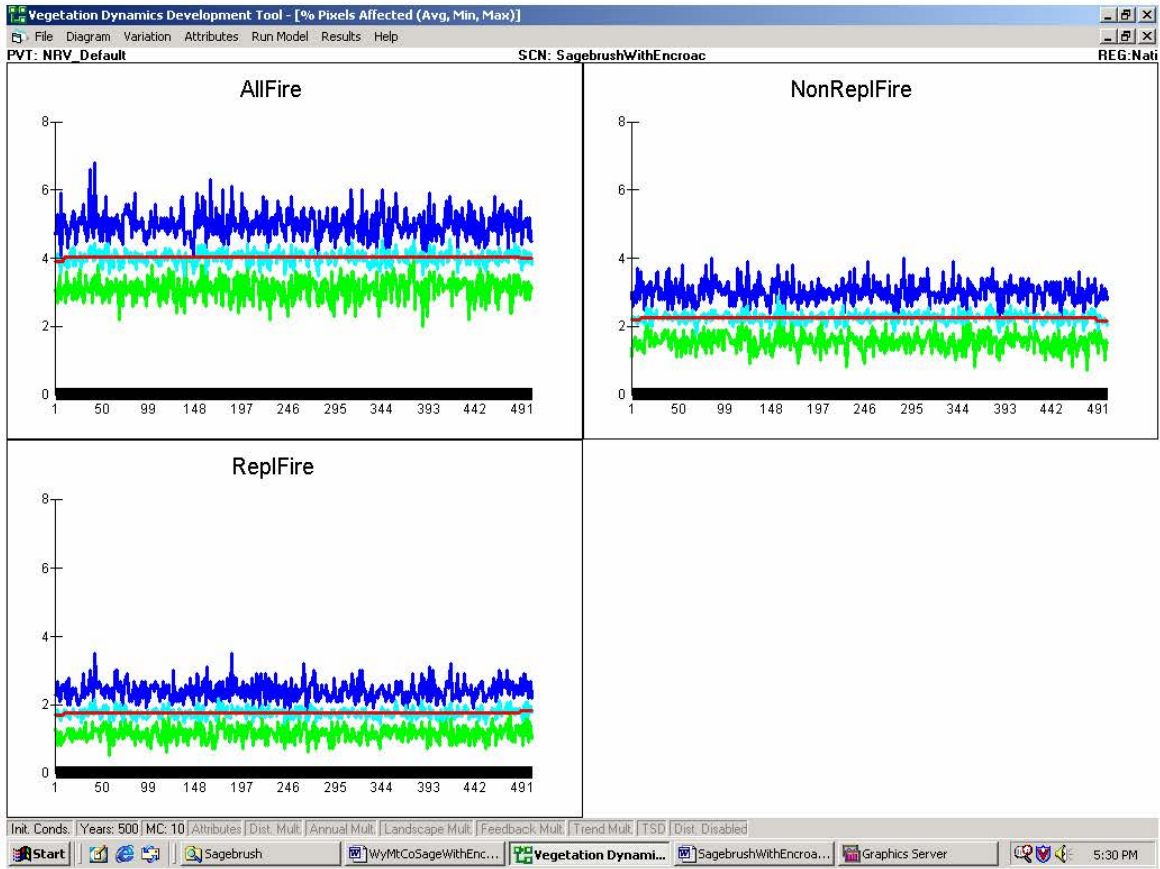
U.S. Department of Agriculture, Forest Service, Rocky Mountain Research Station, Fire Sciences Laboratory (2002, December). Fire Effects Information System, [Online]. Available: <http://www.fs.fed.us/database/feis/> [Accessed: 2/2/03].

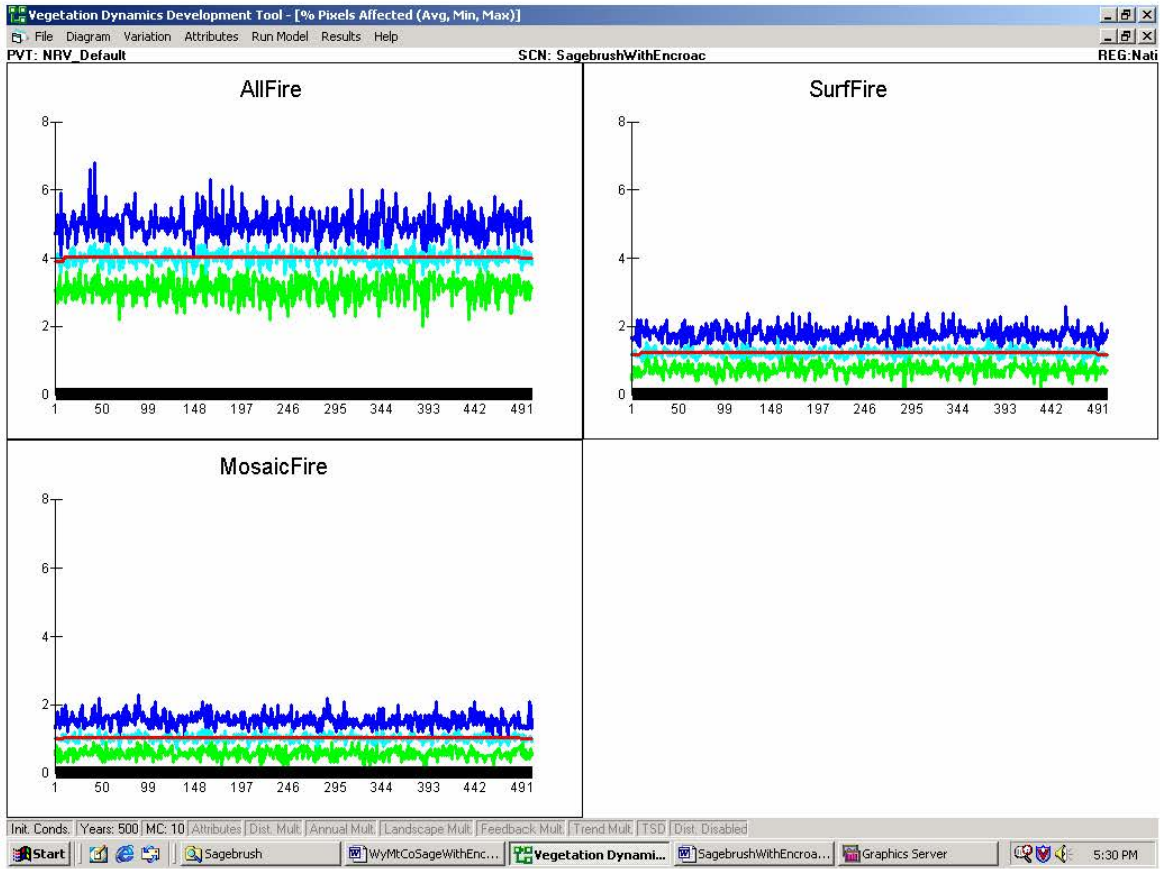
Wright, Henry A., Neuenschwander, Leon F., and Britton, Carlton M. 1979. The role and use of fire in Sagebrush-Grass and Pinyon-Juniper Plant Communities. Gen. Tech. Rep. INT-GTR-58. Ogden, UT: U.S. Department of Agriculture, Forest Service, Intermountain Research Station. 48 p.

VDDT Results









Photographs:
Landscape CC1

Landscape CC2

Landscape CC3

Landscape-Current

Landscape-Historical

Class A – Early Development

Class B – Mid-Development Closed

Class C – Mid-Development Open

Class D – Late Development Open

Class E – Late Development Closed