

**\*\*11/25/03 DRAFT\*\***

**Fire Regime Condition Class (FRCC) Interagency Handbook  
Reference Conditions**

**Modeler:** Steve Barrett

**Date:** 11/25/03 **PNVG Code:** SPFI1

**Potential Natural Vegetation Group:** Interior West Lower Subalpine Forest #1.

**Geographic Area:** Northern Rockies and western portions of Central- and Southern Rockies.

**Description:** PNVG occurs in the lower subalpine zone on gentle to moderately steep terrain (e.g., 10-60% slope); relatively dry sites generally are dominated by lodgepole pine, and moist sites are dominated by Engelmann spruce and subalpine fir, or by quaking aspen (i.e., in Central and Southern Rockies).

**Fire Regime Description:** Fire Regimes IV and III: Moderately long- to long-interval (e.g., 100-200 yr) stand replacement fires, with a substantial amount of terrain influenced by moderately long-interval (e.g., 50-100 yr) mixed severity fires.

**Vegetation Type and Structure**

| Class                     | Percent of Landscape | Description  |
|---------------------------|----------------------|--|
| A: post replacement       | 20                   | Early succession after moderately long- to long interval replacement fires, and after moderately long-interval mixed severity fires                            |
| B: mid-development closed | 35                   | Shade intolerant- and mixed conifer saplings to poles (> 40% canopy cover)   |
| C: mid- open              | 15                   | Primarily shade intolerant saplings to poles (<40% canopy cover)   |
| D: late- open             | 10                   | Moderate- to large diameter shade intolerant- and mixed conifer species (<40% canopy cover) in small- to moderate size patches, generally on southerly aspects |
| E: late- closed           | 20                   | Moderate- to large diameter shade intolerant- and mixed conifer species (>40% canopy cover), in moderate- to large size patches, all aspects                   |
| Total                     | 100                  |  |

### **Fire Frequency and Severity**

| Fire Frequency-Severity | Modeled Probability | Pct, All Fires | Description  |
|-------------------------|---------------------|----------------|--|
| Replacement Fire        | .006                | 67             | Replacement fires largely in E and D   |
| Non-Replacement Fire    | .003                | 33             | Generally severe mixed severity fires (e.g., on non-steep terrain in C and D; in forest-type transition zones; at margins of replacement burns). |
| All Fire Frequency*     | .009                | 100            |  |

\*Sum of replacement fire and non-replacement fire probabilities.

### **References**

Agee, James K. 1993. Fire ecology of Pacific Northwest forests. Island Press, Washington DC, 493 p.

Arno, Stephen F. 2000. Fire in western forest ecosystems. In: Brown, James K.; Smith, Jane Kapler, eds. Wildland fire in ecosystems: Effects of fire on flora. Gen. Tech. Rep. RMRS-GTR-42-vol. 2. Ogden, UT: U.S. Department of Agriculture, Forest Service, Rocky Mountain Research Station: 97-120.

Arno, Stephen F.; Reinhardt, Elizabeth D.; Scott, Joe H. 1993. Forest structure and landscape patterns in the subalpine lodgepole pine type: A procedure for quantifying past and present stand conditions. Gen. Tech. Rep. INT-294. Ogden, UT: U.S. Department of Agriculture, Forest Service, Intermountain Research Station. 17p.

Barrett, Stephen W. 1994a. Fire regimes on andesitic mountain terrain in northeastern Yellowstone National Park. International Journal of Wildland Fire 4: 65-76.

Barrett, Stephen W. 1994b. Fire regimes on the Caribou National Forest, Southeastern Idaho. Contract final report on file, Pocatello, ID: U.S. Department of Agriculture, Forest Service, Caribou National Forest, Fire Management Division. 25 p.

Barrett, Stephen W. 2002. A Fire Regimes Classification for Northern Rocky Mountain Forests: Results from Three Decades of Fire History Research. Contract final report on file, Planning Division, USDA Forest Service Flathead National Forest, Kalispell MT. 61 p.

Barrett, Stephen W., Arno, Stephen F., Key, Carl H. 1991. Fire regimes of western larch-lodgepole pine forests in Glacier National Park, Montana. Canadian Journal of Forest Research 21: 1711-1720.

Brown, James K.; Arno, Stephen F.; Barrett, Stephen W.; Menakis, James P. 1994. Comparing the prescribed natural fire program with presettlement fires in the Selway-Bitterroot Wilderness. *International Journal of Wildland Fire* 4(3): 157-168.

Eyre, F. H., ed. 1980. *Forest cover types of the United States and Canada*. Washington, DC: Society of American Foresters. 148 p.

Hawkes, Brad C. 1979. *Fire history and fuel appraisal study of Kananaskis Provincial Park*. Thesis, University of Alberta, Edmonton ALTA. 173 p.

Hessburg, Paul F.; Smith, Bradley G.; Kreiter, Scott D.; Miller, Craig A.; Salter, R. Brion; McNicoll, Cecilia H.; Hann, Wendel J. Historical and current forest and range landscapes in the Interior Columbia River Basin and portions of the Klamath and Great Basins. Part I: Linking vegetation patterns and landscape vulnerability to potential insect and pathogen disturbances. Gen. Tech. Rep. PNW-GTR-458. Portland, OR: U.S. Department of Agriculture, Forest Service, Pacific Northwest Research Station. 357 p. (Quigley, Thomas, M., ed., Interior Columbia Basin Ecosystem Management Project: scientific assessment).

Lesica, Peter. 1996. Using fire history models to estimate proportions of old growth forest in Northwest Montana, USA. *Biological Conservation* 77: 33-39.

Loope, Lloyd L.; Gruell, George E. 1973. The ecological role of fire in the Jackson Hole area, northwestern Wyoming. *Quaternary Research* 3(3): 425-443.

Quigley, Thomas M.; Arbelbide, Sylvia J., tech. eds. 1997. An assessment of ecosystem components in the interior Columbia basin and portions of the Klamath and Great Basins: volume 1. Gen. Tech. Rep. PNW-GTR-405. Portland, OR: U.S. Department of Agriculture, Forest Service, Pacific Northwest Research Station. 4 vol. (Quigley, Thomas M., tech. ed.; The Interior Columbia Basin Ecosystem Management Project: Scientific Assessment).

Romme, William H. 1982. Fire and landscape diversity in subalpine forests of Yellowstone National Park. *Ecological Monographs* 52(2): 199-221.

Romme, William H.; Dennis H. Knight. 1981. Fire frequency and subalpine forest succession along a topographic gradient in Wyoming. *Ecology* 62: 319-326.

Schmidt, Kirsten M, Menakis, James P., Hardy, Colin C., Hann, Wendel J., Bunnell, David L. 2002. Development of coarse-scale spatial data for wildland fire and fuel management. Gen. Tech. Rep. RMRS-GTR-87. Fort Collins, CO: U.S. Department of Agriculture, Forest Service, Rocky Mountain Research Station. 41 p. + CD.

Steele, Robert; Cooper, Steven V.; Ondov, David M.; Roberts, David W.; Pfister, Robert D. 1983. Forest habitat types of eastern Idaho and western Wyoming. Gen. Tech. Rep. INT-144. Ogden, UT: U.S. Department of Agriculture, Forest Service, Intermountain Mountain Research Station. 122 p

Tande, Gerald F. 1979. Fire history and vegetation pattern of coniferous forests in Jasper National Park, Alberta. Canadian Journal of Botany 57: 1912-1931.

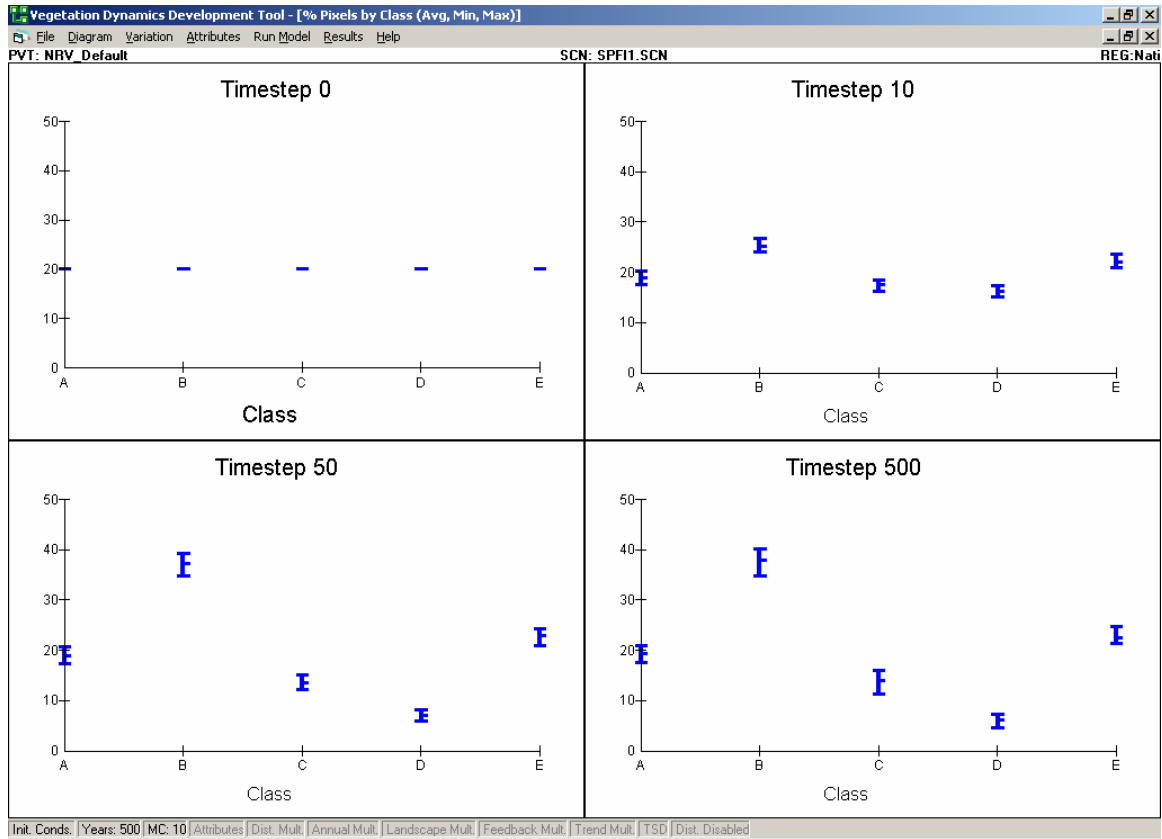
U.S. Department of Agriculture, Forest Service, Rocky Mountain Research Station, Fire Sciences Laboratory (2002, December). Fire Effects Information System, [Online]. Available: <http://www.fs.fed.us/database/feis/> [Accessed 5/22/03].

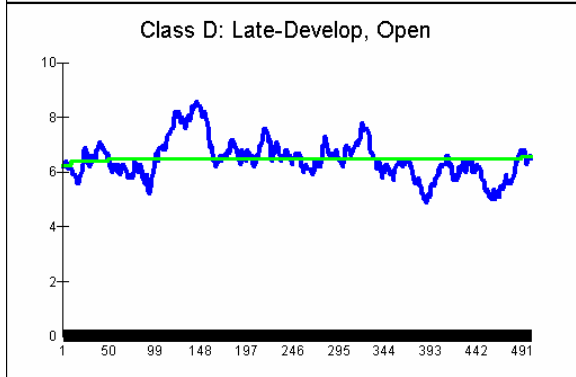
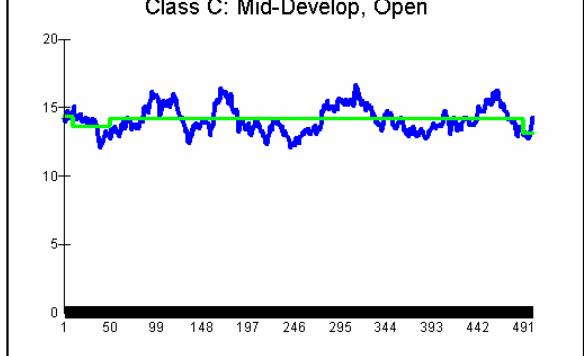
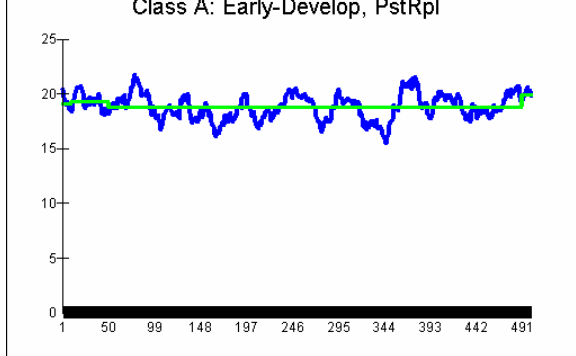
Wadleigh, L.; Jenkins, Michael J. 1996. Fire frequency and the vegetative mosaic of a spruce-fir forest in northern Utah. Great Basin Naturalist 56: 28-37.

#### MODELER FIELD REVIEWS

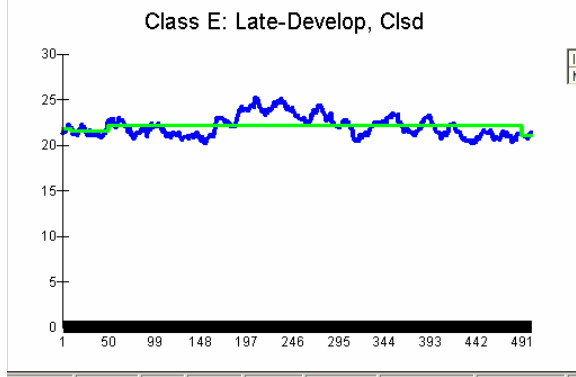
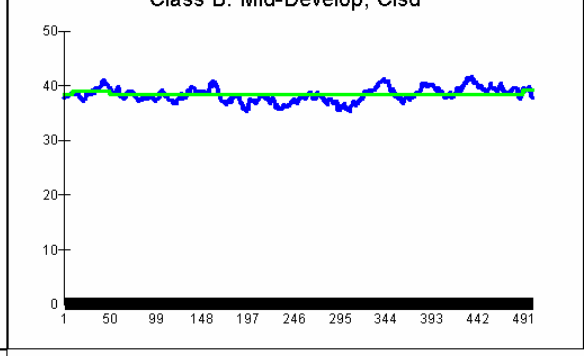
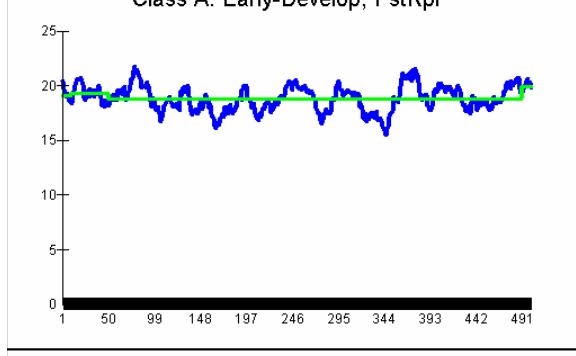
Barrett, Stephen W.; Middle Fork Flathead River drainage, Flathead National Forest and Glacier National Park, 2003.

# VDDT Results

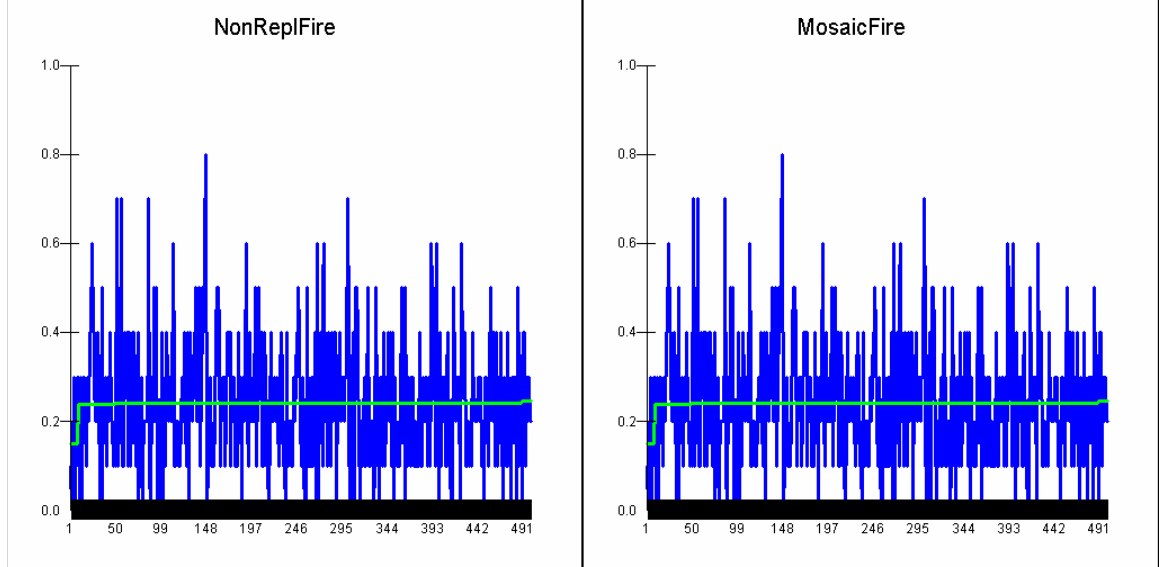
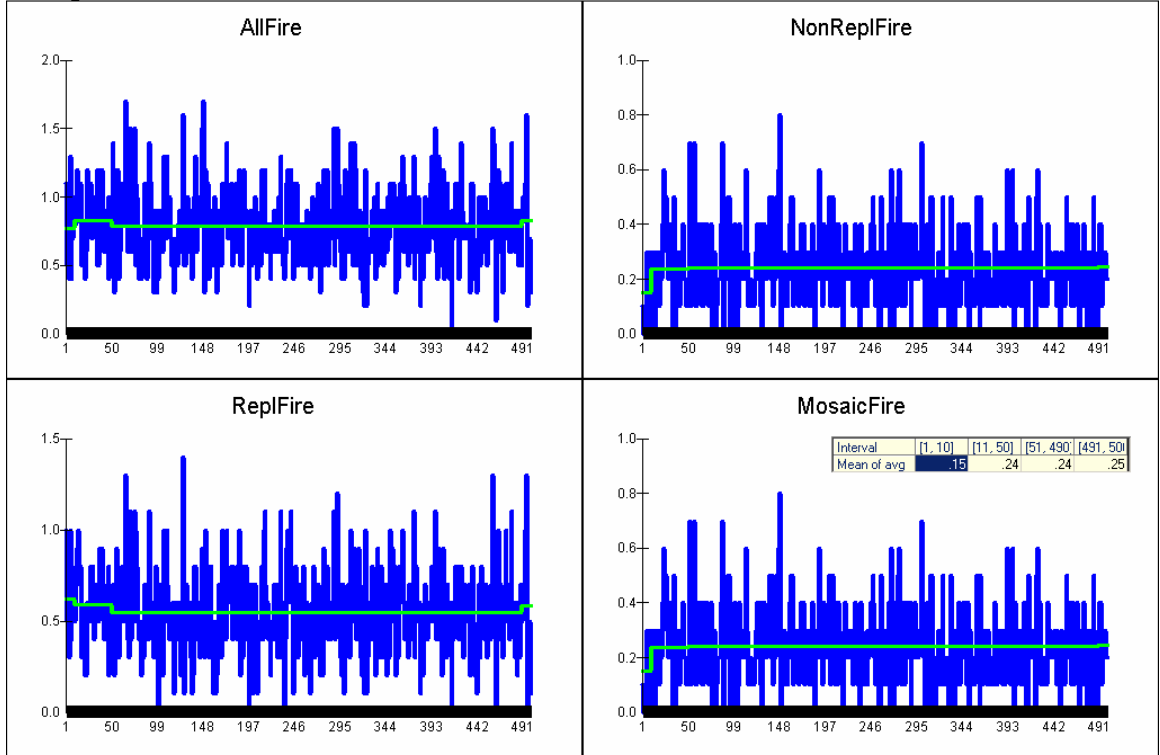




| Interval    | [1, 10] | [11, 50] | [51, 490] | [491, 50] |
|-------------|---------|----------|-----------|-----------|
| Mean of avg | 6.22    | 6.42     | 6.47      | 6.57      |



| Interval    | [1, 10] | [11, 50] | [51, 490] | [491, 50] |
|-------------|---------|----------|-----------|-----------|
| Mean of avg | 21.79   | 21.51    | 22.17     | 21.06     |



| Interval    | [1, 10] | [11, 50] | [51, 490] | [491, 501] |
|-------------|---------|----------|-----------|------------|
| Mean of avg | .15     | .24      | .24       | .25        |